

ALPHA

8478BOG100P62

EAN 4031582347074

Fixed castor, Fork made of Stainless Steel, wheel axle with nut, plate fitting.

Wheel made of heat resisting synthetic material, self-lubricating bushing



BETTER MOBILITY. BETTER LIFE.

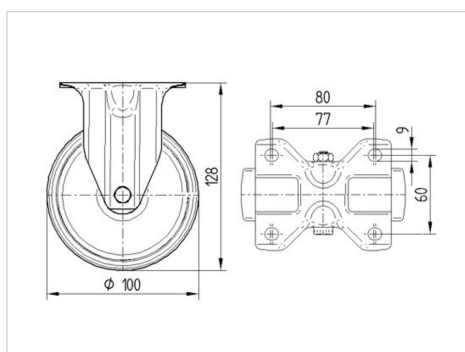


Picture may differ from original product

Technical Data

Wheel diameter	100 mm
Width of Tread	35 mm
Castor width	85 mm
Size of Plate	100 x 85 mm
Plate hole centres	80/77 x 60 mm
Plate hole	9 mm
Overall height	128 mm
Temperature	- 40 / + 250 °C
Standard	EN 12532
Weight	0.512 kg
Hardness of tread	Shore D 90
Load capacity	125 kg
Load capacity (static)	250 kg

Dimensions



Advantages at a glance

Roll performance	● ● ● ● ○
Movement noise	● ● ● ○ ○
Attrition	● ● ● ● ●
Corrosion resistance	● ● ● ● ●

ALPHA

8478BOG100P62

EAN 4031582347074



BETTER MOBILITY. BETTER LIFE.

Structure & Mounting

