

# STYLEA

## 5925UOI035L51-10 LOW

EAN 4031582356779

Swivel castor with wheel brake, housing made of Polyamide, with blind hole fitting. Wheel centre made of Polyamide, plain bearing



BETTER MOBILITY. BETTER LIFE.

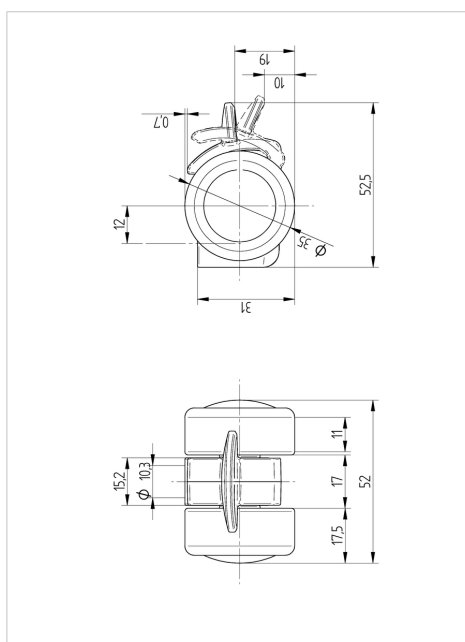


Picture may differ from original product

### Technical Data

Wheel diameter	35 mm
Width of Tread	12 mm
Castor width	52 mm
Centre hole	10 mm
Dome-Ø	15.2 mm
Offset	12 mm
Swivel Interference	90 mm
Overall height	33 mm
Temperature	- 20 / + 60 °C
Standard	EN 12528
Weight	0.058 kg
Swivel Radius	45 mm
Load capacity	50 kg
Load capacity (static)	100 kg

### Dimensions



### Advantages at a glance

Roll performance	● ● ● ○ ○
Movement noise	● ● ● ○ ○
Attrition	● ● ● ● ●
Corrosion resistance	● ● ● ● ○

### Structure & Mounting

