

LINEA

5925UAP100L51-11 RAL9002

EAN 4031582348934

Swivel castor with wheel brake, housing made of Polyamide, with blind hole fitting. Wheel centre made of Polyamide, Tread: Polyurethane, precision ball bearing



BETTER MOBILITY. BETTER LIFE.



Picture may differ from original product

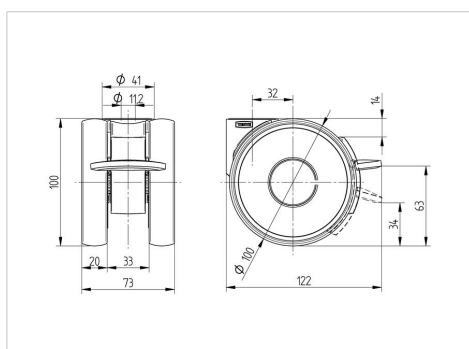
Technical Data

Wheel diameter	100 mm
Width of Tread	20 mm
Castor width	73 mm
Centre hole	11 mm
Dome-Ø	41 mm
Offset	32 mm
Swivel Interference	204 mm
Overall height	100 mm
Temperature	- 10 / + 40 °C
Standard	EN 12528
Weight	0.438 kg
Swivel Radius	102 mm
Hardness of tread	Shore A 92
Load capacity	100 kg
Load capacity (static)	200 kg

Advantages at a glance

Roll performance	● ● ● ○ ○
Movement noise	● ● ● ○ ○
Attrition	● ● ● ○ ○
Corrosion resistance	● ● ● ● ○

Dimensions



Structure & Mounting

