

LINEA

5925UAP065L51-10 RaI 9002 BWR 7015

EAN 4031582437089

Swivel castor with wheel brake, housing made of Polyamide, with blind hole fitting. Wheel centre made of Polyamide, Tread: Polyurethane, precision ball bearing



BETTER MOBILITY. BETTER LIFE.



Picture may differ from original product

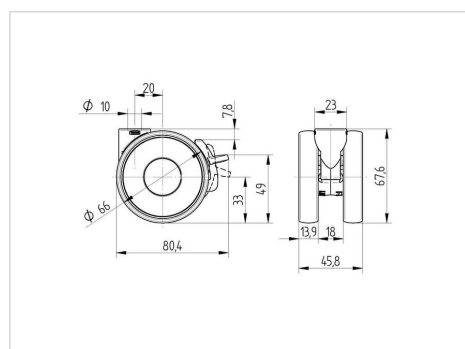
Technical Data

Wheel diameter	65 mm
Width of Tread	13.9 mm
Castor width	46 mm
Centre hole	10 mm
Dome-Ø	23 mm
Swivel Interference	134 mm
Overall height	68 mm
Temperature	- 10 / + 40 °C
Standard	EN 12530
Weight	0.129 kg
Swivel Radius	67 mm
Hardness of tread	Shore A 87
Load capacity	90 kg
Load capacity (static)	180 kg

Advantages at a glance

Roll performance	● ● ● ● ●
Movement noise	● ● ● ● ○
Attrition	● ● ● ● ●
Corrosion resistance	● ● ● ● ○

Dimensions



Structure & Mounting

