

**LINEA****5920UAP075L51-10 RAL9002**

EAN 4031582353365

Swivel castor, housing made of Polyamide, with blind hole fitting. Wheel centre made of Polyamide, Tread: Polyurethane, precision ball bearing



BETTER MOBILITY. BETTER LIFE.



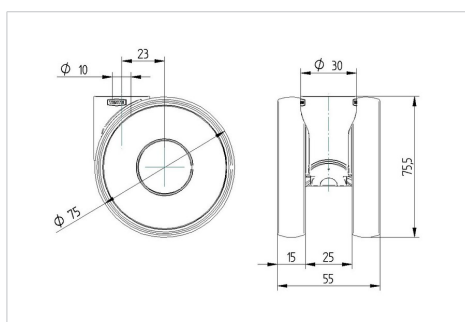
Picture may differ from original product

**Technical Data**

Wheel diameter	75 mm
Width of Tread	15 mm
Castor width	55 mm
Centre hole	10 mm
Dome-Ø	30 mm
Offset	23 mm
Swivel Interference	130 mm
Overall height	75.5 mm
Temperature	- 20 / + 60 °C
Standard	EN 12528
Weight	0.183 kg
Swivel Radius	65 mm
Hardness of tread	Shore A 92
Load capacity	100 kg
Load capacity (static)	200 kg

**Advantages at a glance**

Roll performance	● ● ● ○ ○
Movement noise	● ● ● ○ ○
Attrition	● ● ● ○ ○
Corrosion resistance	● ● ● ● ○

**Dimensions****Structure & Mounting**