

LEVINA

5325PJP075L51-10

EAN 4031582355024

Swivel castor with wheel brake, housing and wheels made from high grade synthetic materials, with integrated threadguards, with blind hole fitting. Wheel centre made of Polypropylene, Tread: TENTEprene (thermoplastic rubber), grey non-marking, precision ball bearing, with threadguards. The castor meets all requirements for EN 12530, except for swivel play.



BETTER MOBILITY. BETTER LIFE.



Picture may differ from original product

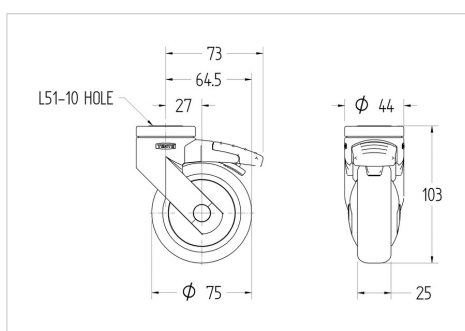
Technical Data

Wheel diameter	75 mm
Width of Tread	25 mm
Castor width	44 mm
Centre hole	10 mm
Dome-Ø	44 mm
Offset	27 mm
Swivel Interference	146 mm
Overall height	103 mm
Temperature	- 10 / + 40 °C
Standard	EN 12530
Weight	0.17 kg
Swivel Radius	73 mm
Hardness of tread	Shore A 87
Load capacity	75 kg
Load capacity (static)	150 kg

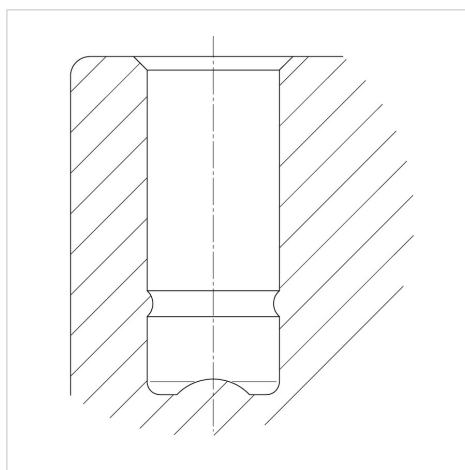
Advantages at a glance

Roll performance	● ● ● ○ ○
Movement noise	● ● ● ● ○
Attrition	● ● ● ○ ○
Corrosion resistance	● ● ● ● ○

Dimensions



Structure & Mounting



LEVINA

5325PJP075L51-10

EAN 4031582355024



BETTER MOBILITY. BETTER LIFE.

Structure & Mounting



Design Award Winner

German Designer Club

