

LEVINA

5320JP075L51-10

EAN 4031582355000

Swivel castor, housing and wheels made from high grade synthetic materials, with integrated threadguards, with blind hole fitting. Wheel centre made of Polypropylene, Tread: TENTEprene (thermoplastic rubber), grey non-marking, precision ball bearing, with threadguards. The castor meets all requirements for EN 12530, except for swivel play.



BETTER MOBILITY. BETTER LIFE.



Picture may differ from original product

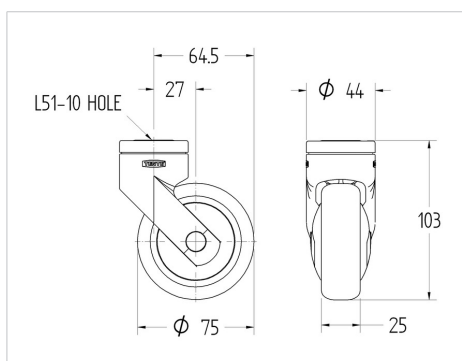
Technical Data

| | |
|------------------------|----------------|
| Wheel diameter | 75 mm |
| Width of Tread | 25 mm |
| Castor width | 44 mm |
| Centre hole | 10 mm |
| Dome-Ø | 44 mm |
| Offset | 27 mm |
| Swivel Interference | 129 mm |
| Overall height | 103 mm |
| Temperature | - 10 / + 40 °C |
| Standard | EN 12530 |
| Weight | 0.154 kg |
| Swivel Radius | 64.5 mm |
| Hardness of tread | Shore A 87 |
| Load capacity | 100 kg |
| Load capacity (static) | 200 kg |

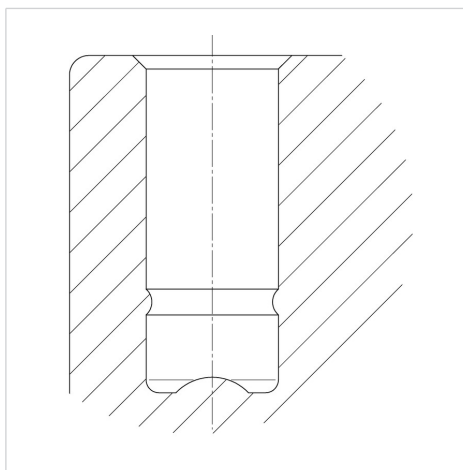
Advantages at a glance

| | |
|----------------------|-----------|
| Roll performance | ● ● ● ○ ○ |
| Movement noise | ● ● ● ● ○ |
| Attrition | ● ● ● ○ ○ |
| Corrosion resistance | ● ● ● ● ○ |

Dimensions



Structure & Mounting



LEVINA

5320PJP075L51-10

EAN 4031582355000



BETTER MOBILITY. BETTER LIFE.

Structure & Mounting

