

DELTA

3648IEP200P63

EAN 4031582337198

Fixed castor, Fork made of heavy pressed steel, bright zinc plated, blue passivated, wheel axle with nut, plate fitting.

Wheel centre made of Aluminium, Tread: black elastic-tyre, vulcanized, precision ball bearing



BETTER MOBILITY. BETTER LIFE.

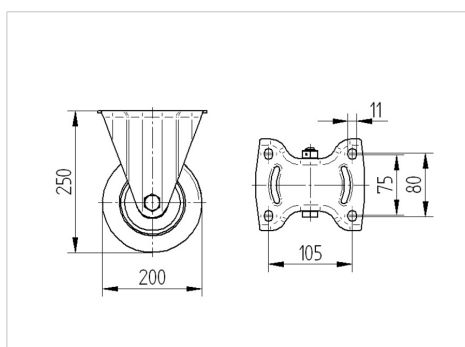


Picture may differ from original product

Technical Data

Wheel diameter	200 mm
Width of Tread	50 mm
Castor width	115 mm
Size of Plate	137 x 115,0 mm
Plate hole centres	105 x 80/75 mm
Plate hole	11 mm
Dome-Ø	115 mm
Overall height	250 mm
Temperature	- 20 / + 85 °C
Standard	EN 12532
Weight	3.223 kg
Hardness of tread	Shore A 68
Load capacity	450 kg
Load capacity (static)	900 kg

Dimensions



Advantages at a glance

Roll performance	● ● ● ○ ○
Movement noise	● ● ● ○ ○
Attrition	● ● ● ○ ○
Corrosion resistance	● ● ● ○ ○

DELTA

3648IEP200P63

EAN 4031582337198



BETTER MOBILITY. BETTER LIFE.

Structure & Mounting

